



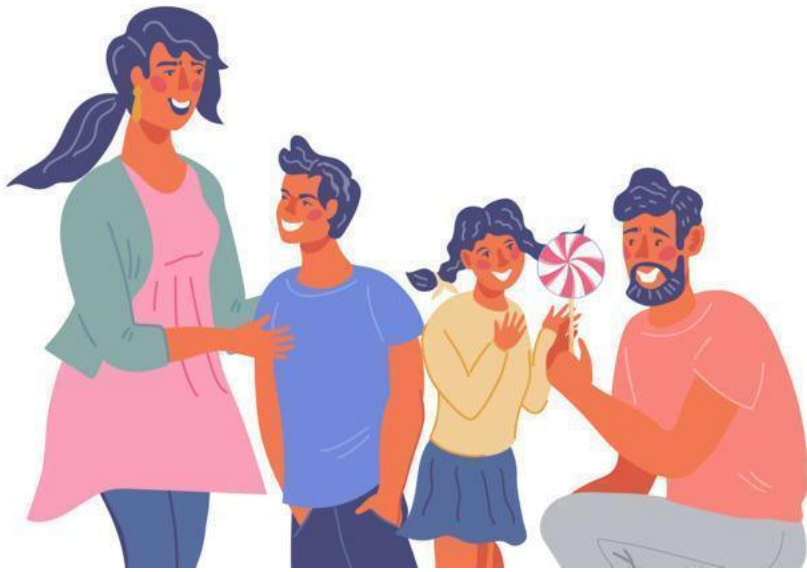
# Oakham Primary School



## Parent Workshop

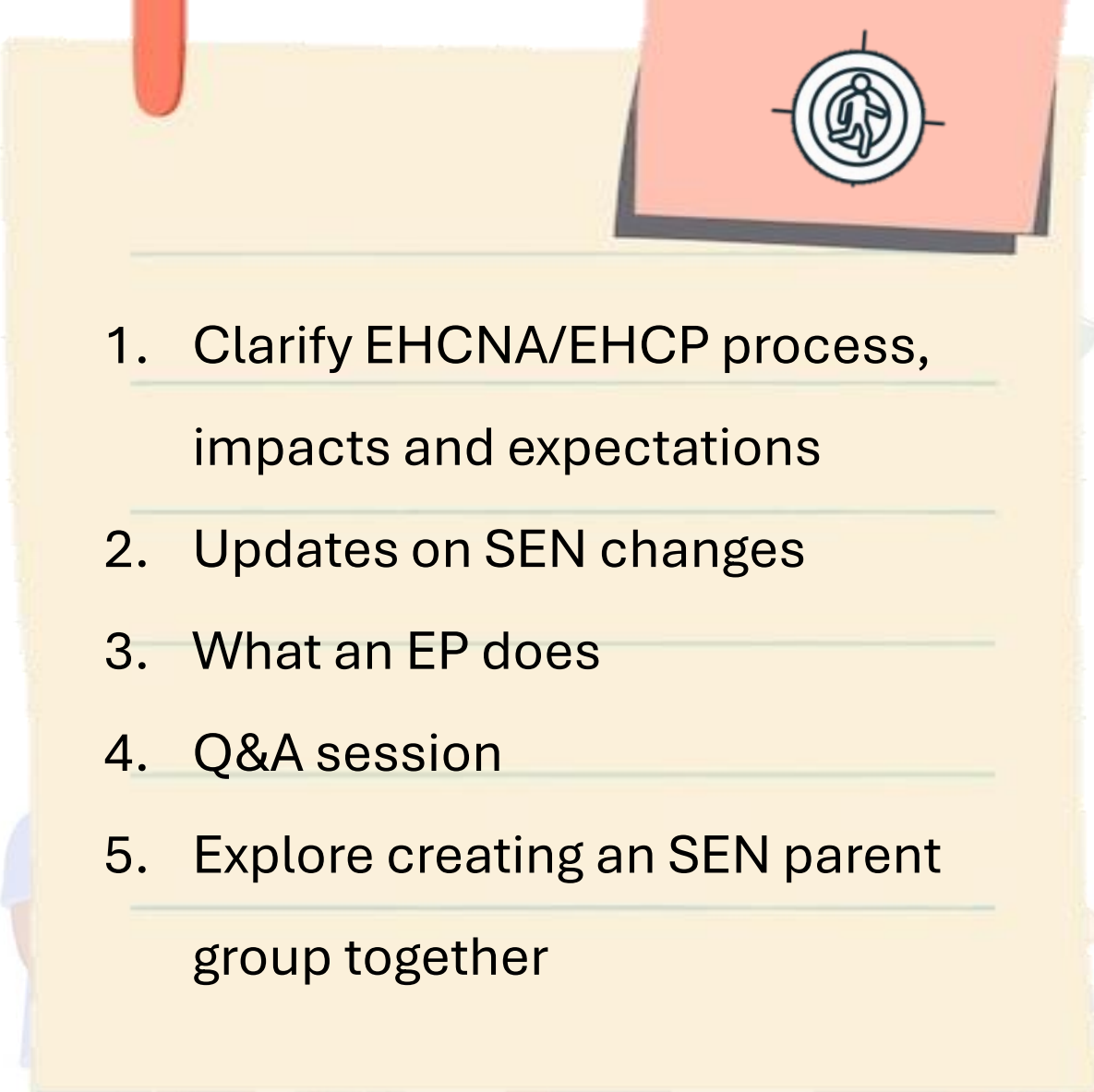
Vivian Ng

*Trainee Educational Psychologist  
(TEP)*



*Working together to promote inclusion and make a difference with  
compassion for all children and young people*

# Aims for this session

- 
1. Clarify EHCNA/EHCP process, impacts and expectations
  2. Updates on SEN changes
  3. What an EP does
  4. Q&A session
  5. Explore creating an SEN parent group together



# SEND process

Graduated response: assess, plan, do, review **cycle** when a need and/or concern is identified

Trust in the process: EPs work with CYP from 0-25. It's not a rush, it's about getting right

An **Education, Health and Care Plan (EHCP)** is a *legal* document that describes a child or young person's *special educational needs*, the *support* required to meet those needs and the outcomes they intend to *achieve*. This plan can remain in place until the child or young person reaches the age of 25.

This is a cyclical and dynamic process

EHCP to be **reviewed** at least once a year (annual review)

**Ongoing** involvement from inclusion support, working with the family, school and services

**Q. What is inclusion support?**  
In Sandwell inclusion support are made up of specialist advisory teacher teams (CCAT, Learning and SEMH), the sensory support team and the educational and child psychology team.

Further edits if needed, then a plan is issued

**Final plan issued**

**Draft plan shared with parents**

## Q. What about a CAM?

CAMs are no longer a statutory process. We can proceed with the application without it.

**Request** for an EHCNA application if further support is required

The EHCNA process has a 20-week legal time limit from the request to final plan

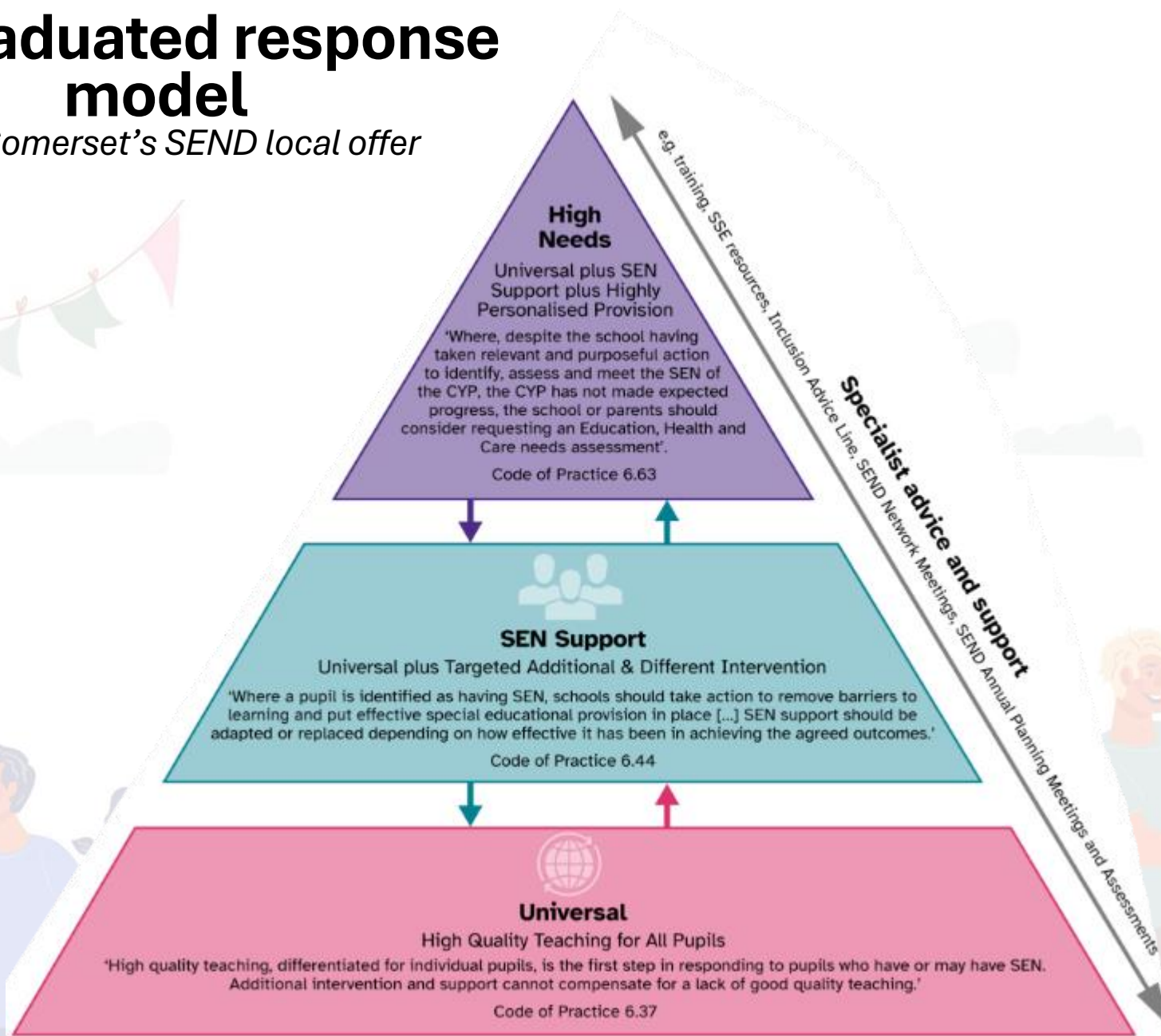
**Panel's decision**  
Yes to assess  
No - parents can appeal decision (can go to mediation)

**Panel's decision**  
Yes to plan  
No - parents can appeal decision (can go to SEND tribunal)

**Assessment** – parent views, child's views, evidence and statutory (psychological) advice

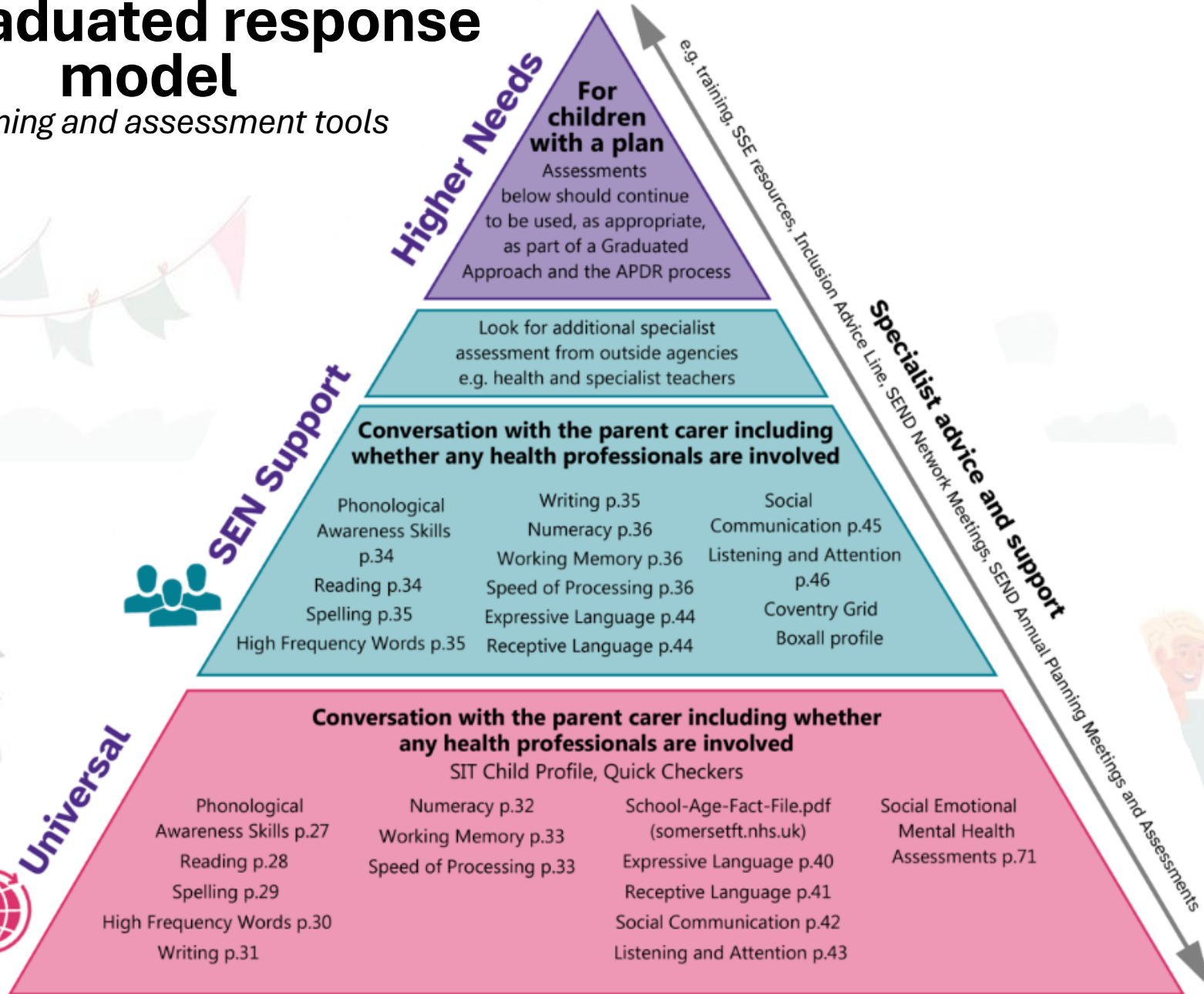
# The graduated response model

From Somerset's SEND local offer

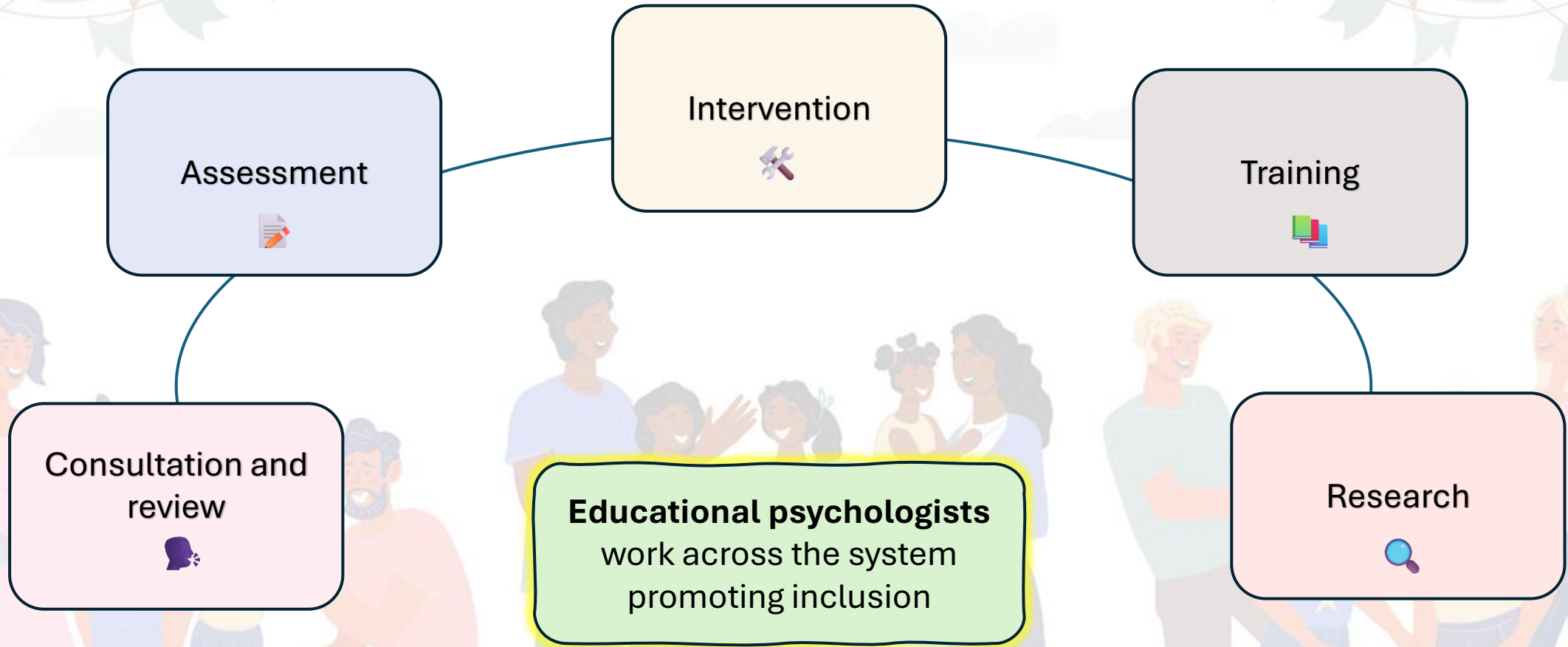


# The graduated response model

Screening and assessment tools



# What does an EP do?





Parent Group?



[www.menti.com](https://www.menti.com)  
5472 5279



# Any questions, thoughts or reflections?

We are concerned that our daughter may have autism. We need something in place

As parents were potentially at the start of this journey, the comments from the other parents in the room and their experiences quite honestly scare me, what is the school going to do about it?

It was hard hearing other parents experiences and difficulties they are facing. And with my child still in yr 1, I'm already worried about him and his needs. This system needs to think more



# Signposting – family support

## Family Support

<https://fis.sandwell.gov.uk/kb5/sandwell/directory/family.page?familychannel=5>

## Family hubs

<https://fis.sandwell.gov.uk/kb5/sandwell/directory/advice.page?id=lHQyrCEtzOo>

## Barnardo's

<https://www.sandwellfamilyhubs.barnardos.org.uk/>

## Family information service

[family\\_information@sandwell.gov.uk](mailto:family_information@sandwell.gov.uk)

## SEND local offer

[SEND\\_LocalOffer@sandwell.gov.uk](mailto:SEND_LocalOffer@sandwell.gov.uk)



Sandwell Family Hubs Website



Barnardo's