



# EARLY YEARS FOUNDATION STAGE

September 2025



WELCOME TO OAKHAM  
PRIMARY SCHOOL





## MEET THE STAFF



**MRS SMITH**  
**EYFS LEAD/ASSITANT**  
**HEAD**

### **Our team:**

Mrs Grainger  
Mrs Ward  
Mrs Currie  
Miss Whittingham  
Miss Bentley  
Mrs Williams  
Mrs Reilly  
Mrs Langford  
Mrs Taylor  
Mrs Hannibal Law (Mrs H)



# THE SCHOOL DAY

**School doors open: 8:40am**

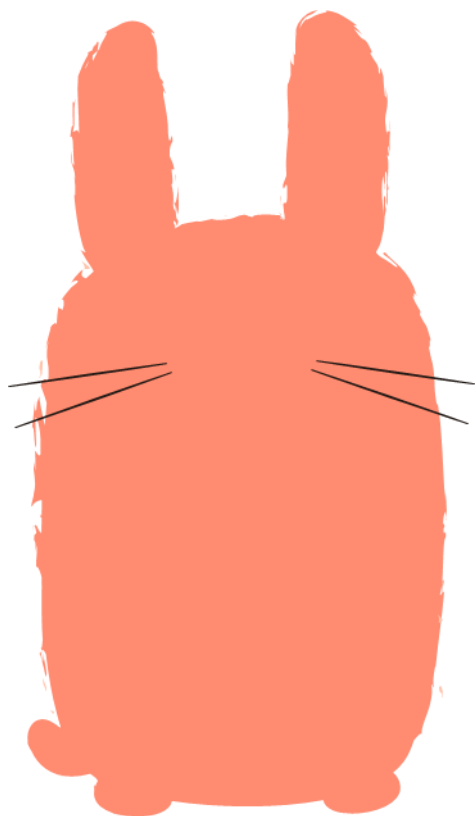
**Lunchtime: 11:50am**

**School day ends: 3:30pm**



Children arriving after the start of a session will be required to sign in at the school office.

At the end of the school day children should be collected from their classroom. If you will be late collecting your child, please inform the school office, as all children will be kept safe in school until they are collected.



## NURSERY SESSIONS

### **Morning 8.40 a.m. – 11.40 a.m.**

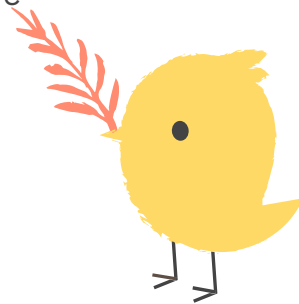
Collection and handover from 11.35 a.m.

### **Afternoon 12.30 p.m. – 3.30 p.m.**

Children are allocated either a morning or an afternoon session.

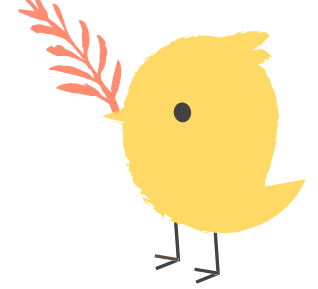
### **Full Time sessions**

We offer a limited number of full time spaces, by either the 'funded' or 'non funded' route. Please see Mrs Smith or Miss Stretton for more details or check the gov.uk website.





## ACCESS TO THE NURSERY



There are 2 entrances to the Nursery:

Through the gate and down the steps (or for pushchairs through the gate in the corner of the key stage 1 playground), accessed from **Darby's Hill Road**.

Through the gate by the Nursery kitchen, accessed by **West Avenue**  
PLEASE NOTE: this gate will not be open at 11.35 a.m. or 12.30 p.m.

Collecting your child from Nursery:

Please arrive in plenty of time, children can become very upset if parents/carers are late. Please ensure you tell the Nursery staff if your child will be collected by someone previously unknown to Nursery staff.

Please note: Children cannot be collected from Nursery by anyone under 16.

## SNACK TIME



You are not required to send in drinks or snacks for your child.

We use a company called “Cool Milk” to provide milk in school free of charge for children up to the age of 5. You are required to register online at [registrations@coolmilk.com](mailto:registrations@coolmilk.com) to ensure your child receives their milk each day.

A piece of fresh fruit/vegetable is provided each day by the Government funded “Fruit for Schools” scheme. Alongside this, we operate a weekly parental contribution fund to buy snack ingredients and cooking items related to making learning more enjoyable.

This is £1 per child and is collected every Monday by the class teacher. If you would like to pay in advance you can pay by the term or for the whole year.



## ATTENDANCE



**PLEASE ENSURE THAT YOUR CONTACT DETAILS ARE KEPT UP TO DATE.**

Your child is expected to attend school every day. We have a waiting list for Nursery places and may need to withdraw your child's place if they fail to attend regularly.

If your child is unable to attend school please let us know by calling the school before 9am or by completing the notification of absence section on our website.

If you are collecting your child for a medical appointment, please let the class teacher and school office know in good time. Where possible, medical appointments should be made for out of school hours to ensure that the children's learning isn't interrupted.

If your child is taken ill at school you will be contacted by a member of staff to arrange collection from the main school reception area.

Please note: If your child has sickness and/or diarrhoea they must not return to Nursery until at least **48 hours after** the last bout of either sickness or diarrhoea.



## MEDICAL AND DIETARY

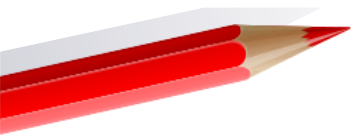


If your child is well enough to be in school but requires medication, you are welcome to come into school to administer it. Most medicines can be given outside of the school day to minimise disruption.

As a good will gesture designated members of school staff will administer **prescribed medication** at the start of lunchtime on completion of a medication request form (available from the school office.)

Inhalers and epi-pens should be left in school and will be stored securely in clearly designated areas.

If your child suffers from any allergies, please ensure that the school office is kept informed.

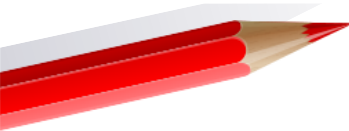




## LUNCHTIME AND SNACKS

All children in Reception, Year 1 and Year 2 are eligible for Universal Infant Free School Meals. A registration form will be required for all children regardless of whether you choose to take the meal.

Our school meals are provided by SIPS Catering and can be pre-ordered via Meal Manager. Menus are available on our school app and website. Further guidance will be provided.



We do provide facilities for your child to eat a packed lunch brought from home. Please ensure that all lunchboxes, water bottles and other containers are clearly marked with your child's name. No glass bottles or fizzy drinks please!

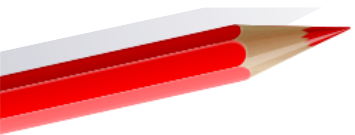
# LEARNING AND DEVELOPING



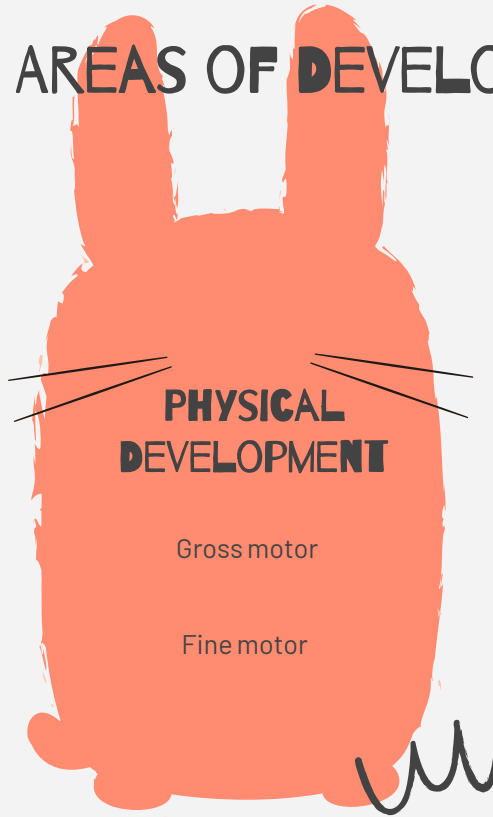
The Reception Curriculum is planned and delivered using a document called the “Statutory Framework for the Foundation Stage (EYFS) 2021”.

For more information, there is a dedicated website:  
<https://www.gov.uk/government/publications/early-years-foundation-stage-framework-2>

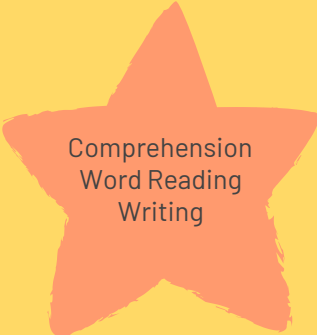
For planning & assessment purposes, the curriculum is planned and assessed through the Prime & Specific Areas of Development.



# 3 PRIME AREAS OF DEVELOPMENT




## LITERACY



Comprehension  
Word Reading  
Writing


# 4 SPECIFIC AREAS

## MATHEMATICS




Number &  
Number patterns

## UNDERSTANDING THE WORLD



Past and present  
People, culture  
and communities  
The natural world

## EXPRESSIVE ART & DESIGN



Creating with  
materials  
Being imaginative  
and expressive



## 4 GUIDING PRINCIPLES



### A UNIQUE CHILD

Every child is a unique child who is constantly learning and can be resilient, capable and self-assured.



### POSITIVE RELATIONSHIPS

Children learn to be strong and independent through positive relationships.



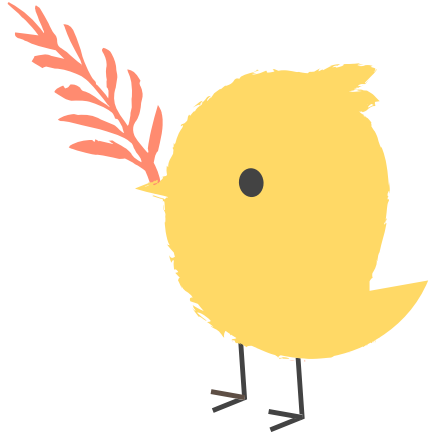
### ENABLING ENVIRONMENTS

Children learn to develop well in enabling environment in which their experiences respond to their individual needs and there is a strong partnership between practitioners, parents and children.



### LEARNING AND DEVELOPMENT

Children develop and learn in different ways. The framework covers the education and care of all children in early year's provision, including children with special educational needs and disabilities.



**PLEASE ENSURE ALL  
UNIFORM IS CLEARLY  
LABELLED WITH YOUR CHILDS  
NAME.**

## SCHOOL UNIFORM

As members of our 'Oakham Family' the children are proud to wear their Oakham Primary uniform and school colours. The wearing of school uniform is compulsory at Oakham and the help and co-operation of parents/carers is appreciated.

- Navy blue cardigan, jumper or sweatshirt
- White or pale blue blouse, shirt or polo shirt
- Grey skirt or trousers
- Sensible black shoes
- Grey or white socks or tights

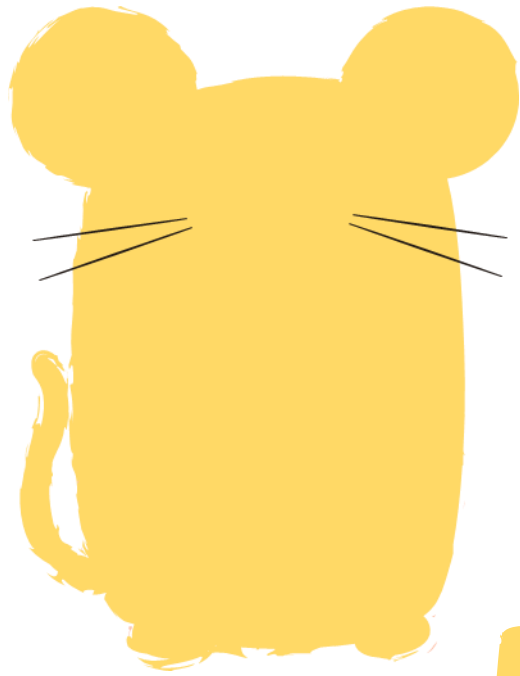
During the summer months children may wear a blue and white summer dress or plain grey shorts.

Jewellery must not be worn in school with the exception of single ear studs - hooped earrings are not permitted for health & safety reasons.

Religious items are permitted but should be removed for PE where possible. Items such as bracelets will need to be covered in PE with a sweatband.

Embroidered uniform and book bags with the school's logo can be purchased online from Ace Embroidery at [oakhamps.ace-online.co.uk/catalogue](https://oakhamps.ace-online.co.uk/catalogue).





## SQUIRRELS CLUB

We operate a breakfast and after school club at Oakham, with a range of activities, games and crafts that is led by Oakham staff.

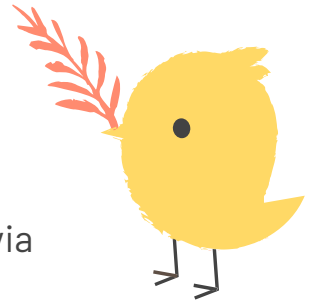
Opening hours: 7:45am to 8:45 am  
3:30pm to 6:00pm

Sessional charges: Breakfast club £6.00 per child  
After school club £9.50 per child

Bookings and payments for Squirrels club should be made via ParentPay.

Children should be collected by 6:00pm prompt. For late collection a charge of £5 per child per 15 minutes will be applied.

If you have any queries, please contact Miss Stretton, the school office or call the Squirrels mobile on 07376 481 659.



# HOW CAN YOU HELP YOUR CHILD AT HOME?



Your child may settle into school more easily if you help them do some of these things independently:

- Use the toilet on their own
- Wash and dry their hands
- Tidy away their toys
- Use lunchbox and be able to open packets/containers
- Know how to use a knife and fork
- Dress and undress themselves and put on socks/tights and shoes
- Blow their nose
- Follow simple instructions
- Say "please", "thank you" and "sorry" at appropriate times



If you are teaching them to write their name, please do so in lower case and not capitals, except for the initial letter e.g. **D**avid.

Please don't worry if your child can't do all of these things before they start school.



## OTHER USEFUL INFORMATION



- Please download OurSchoolsApp via the App store or Google play to ensure that you are able to keep up to date with news and events at Oakham.
- The website is also a good source of information and provides links to policies and our approach to learning and curriculum throughout our school.
- Parking – Please do not park on the double yellow lines or zig-zags outside the school and be respectful to our neighbours when parking your car. There is no vehicular access for parents to the school site unless in an emergency.
- If you have any worries or concerns please speak to your child's class teacher in the first instance.



## CONTACT US

Oakham Primary School  
Darbys Hill Road  
Tividale  
B69 1SG



01384 254 368



[school.office@oakham.sandwell.sch.uk](mailto:school.office@oakham.sandwell.sch.uk)



[www.oakhamprimary.org.uk](http://www.oakhamprimary.org.uk)



[@oakhamprimary](https://twitter.com/oakhamprimary)

CREDITS: This presentation template was created by Slidesgo, including icons by Flaticon and infographics and images by Freepik.



**Parents: Encourage your kids to be different, for it's the different ones that usually end up making a difference in the world.** TSAP